

Section One: Historic Images

The following historic images are referenced in the Narrative Description and Statement of Significance. Sources are noted in Section Two of this Appendix.

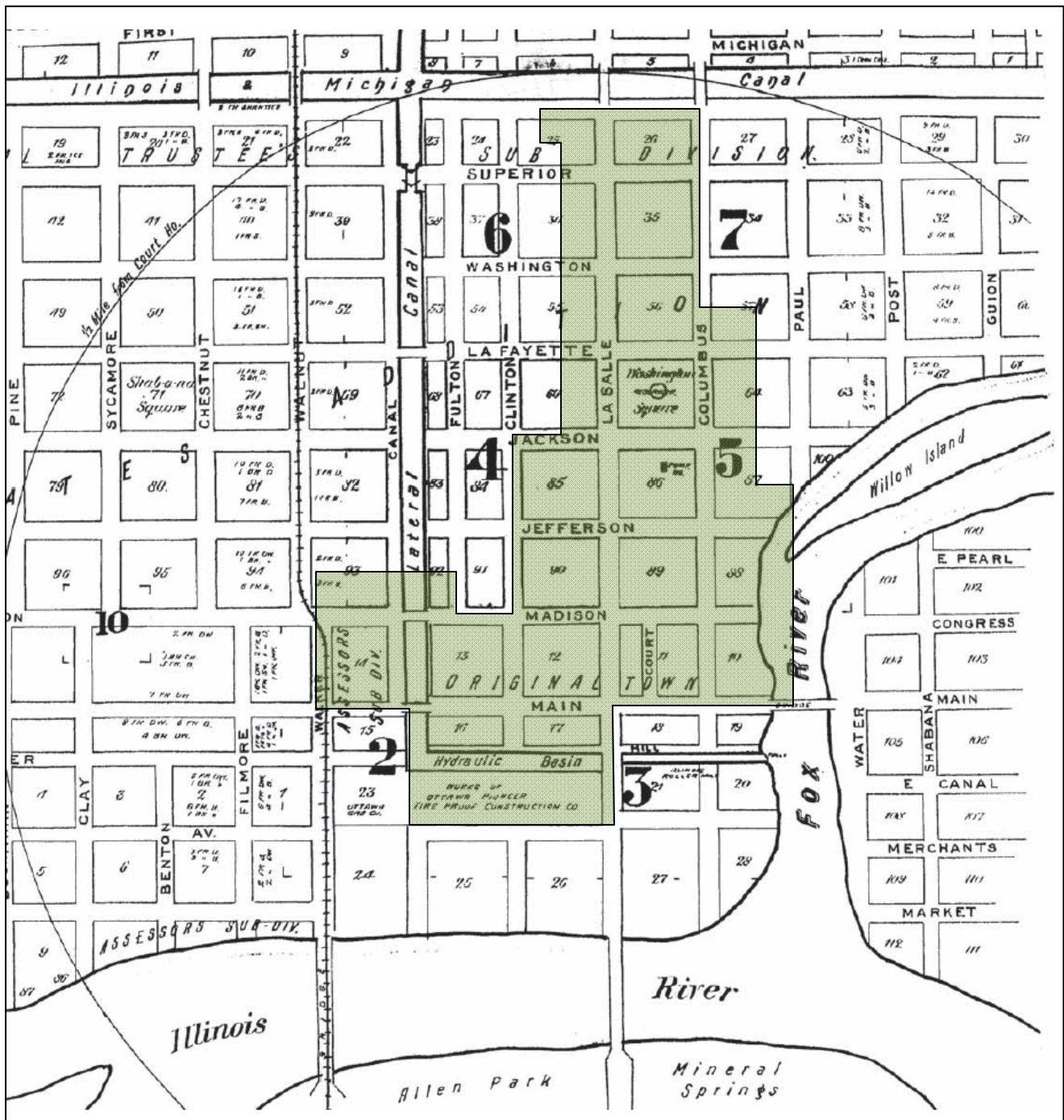


Image A1 – 1888 Sanborn Map. The original plat of 1829 extended north from the Illinois River to Jefferson Street. The area north of Jefferson was added in 1831. Location of the Ottawa Downtown Commercial District is highlighted in green.

APPENDIX: NATIONAL REGISTER OF HISTORIC PLACES REGISTRATION FORM

Page 2 of 4 pages

Ottawa Commercial Historic District, LaSalle County, Illinois

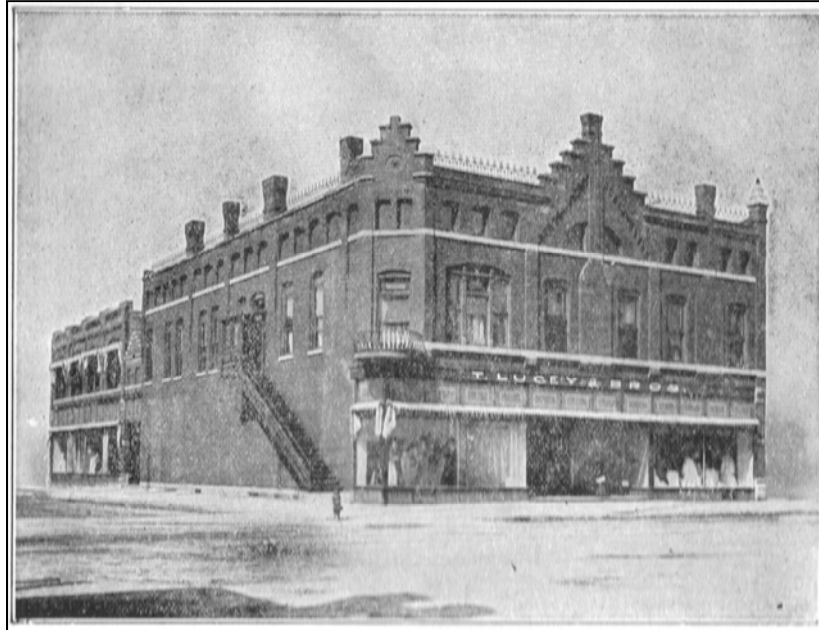


Image A2 – Artist's rendering of Lucey Bros. Department Store, 1908.



Image A3 – View of LaSalle Street across from Courthouse, ca 1860.

APPENDIX: NATIONAL REGISTER OF HISTORIC PLACES REGISTRATION FORM

Page 3 of 4 pages

Ottawa Commercial Historic District, LaSalle County, Illinois



Image A4 – Historic view of Court Street, ca 1893.

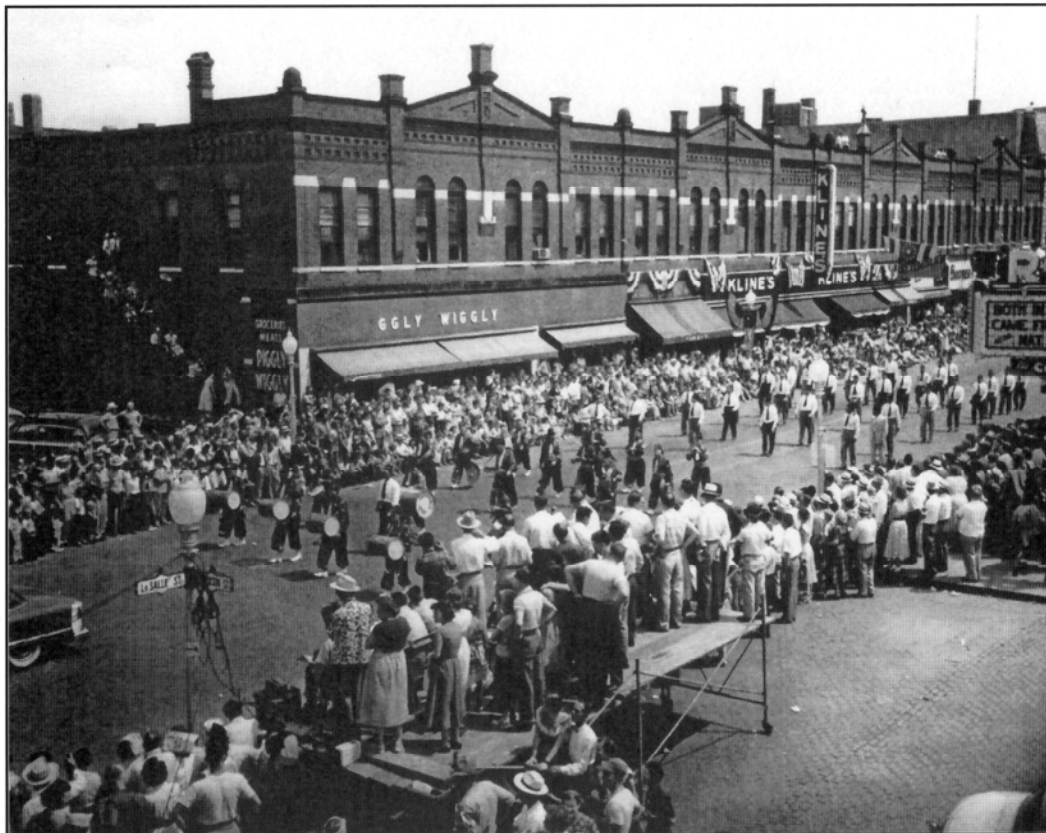


Image A5 – East side of LaSalle Street between Jefferson and Jackson.

Section Two: Image Sources

No.	Subject	File Name	Source
A1	Map of Downtown Ottawa, 1888	Sanborn_1888_page_1.tif	Sanborn Map Company.
A2	Artist's rendering of Lucey Bros. Department Store, 1908	Ottawa019.tif	<i>Ottawa Old and New</i> , page 108.
A3	Historic view of LaSalle Street, ca 1860	Ottawa022.tif	<i>Old Ottawa Scenes</i> , page 3.
A4	Historic view of Court Street, ca 1893	Ottawa 006.tif	<i>Old Ottawa Scenes</i> , page 50.
A5	East side of LaSalle Street between Jefferson and Jackson	Ottawa012.tif	<i>Old Ottawa Scenes</i> , page 198.